



數學智能之第十四屆全港數學盃挑戰賽

The 14th Hong Kong Mathematics Cup Challenge

小學 P4 組試題樣本

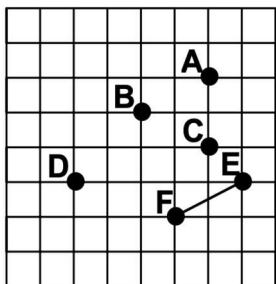
1. 有716粒魚蛋，每枝竹籤可串起6粒魚蛋，要把全部魚蛋串起來，最少要竹籤多少枝？

There are 716 fish balls, and each bamboo branch can string 6 pieces. To string together all the fish balls, how many bamboo branches are required?

- A. 118 B. 119 C. 120 D. 121

2. 下圖中有六點，如果要圍出一個平行四邊形，應選哪四點？

There are six dots in the figure below. If you want to enclose a parallelogram, which four dots should you choose?



- A. ABCD B. ABFE C. BDEF D. BCEF

3. 下面的○內加上什麼運算符號使算式成立？

What arithmetic symbols should be added to the following ○ to make the formula hold?

$$20 \bigcirc 55 \bigcirc 6 = 350$$

- A. \times , $+$ B. $+$, \times C. \times , $-$ D. $-$, \times

4. 下列哪一項物品的容量約是5升？

Which of the following items is about 5L?

- A. 飯碗 rice bowl B. 湯煲 stock pot
C. 茶壺 teapot D. 浴缸 bathtub



香港多元智能教育協會
Hong Kong Multiple Intelligences
Education Association

數學智能之第十四屆全港數學盃挑戰賽
The 14th Hong Kong Mathematics Cup Challenge
小學 P4 組試題樣本答案

1. C

2. B

3. B

4. B